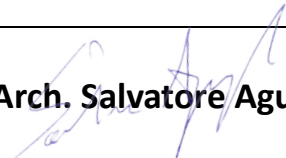
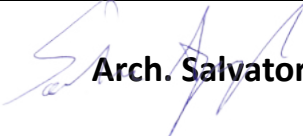


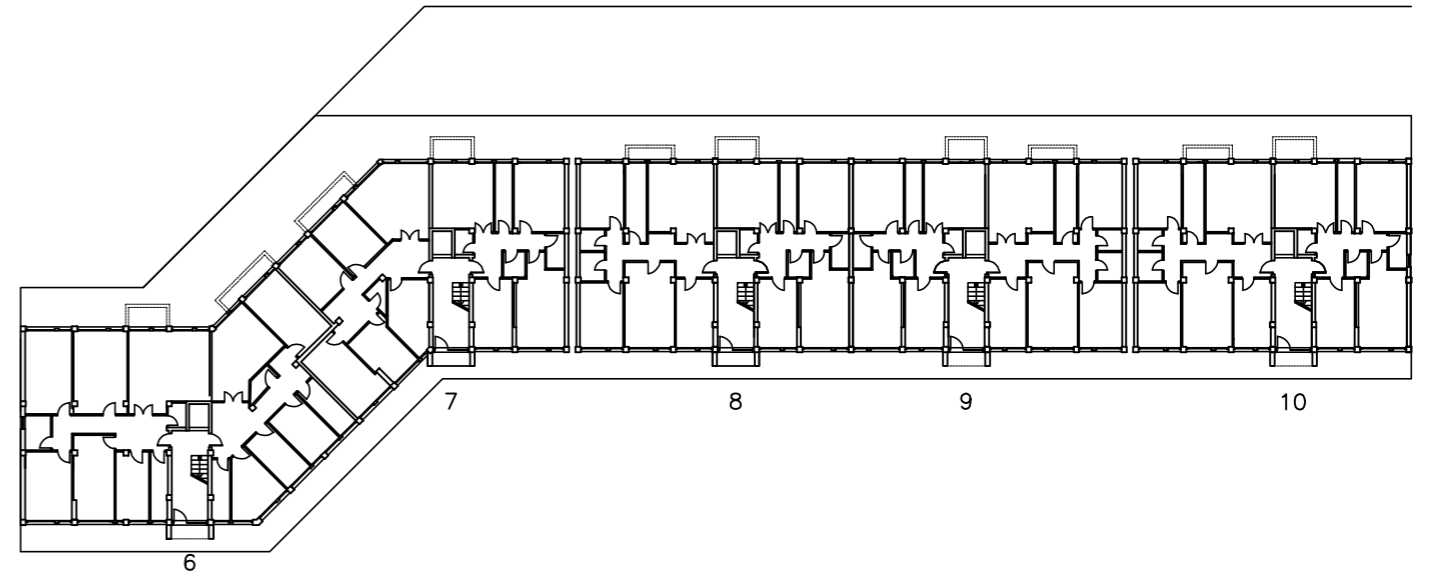
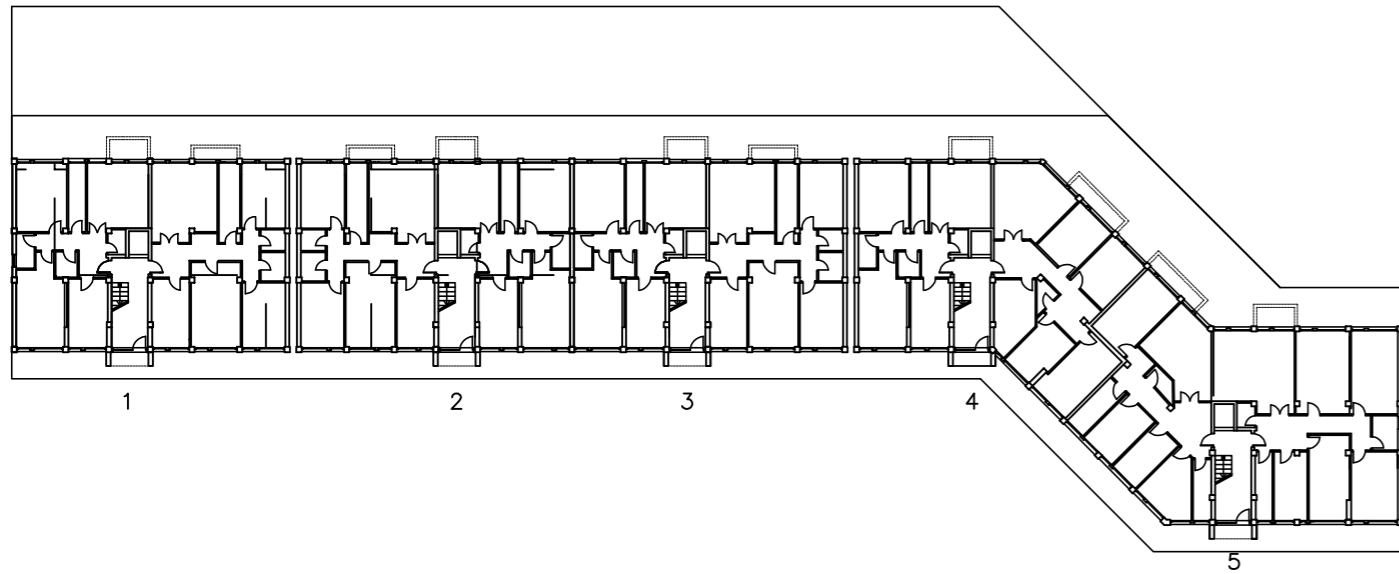
**ISTITUTO AUTONOMO PER LE CASE POPOLARI DELLA
PROVINCIA DI PALERMO**

	Progetto esecutivo per i lavori di manutenzione straordinaria nel Comune di Palermo n. 28 alloggi Lotto 142 quartiere Sperone Piazzale Ignazio Calona, civv. 11 & 12 -
	Elaborati grafici (pianta alloggio tipo – prospetti A – B - C - D)
Progettista	 Arch. Salvatore Aguglia
Il Rup:	 Arch. Salvatore Aguglia

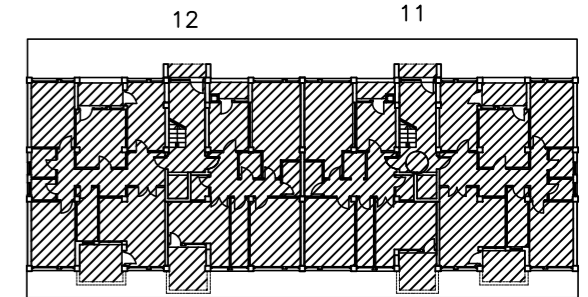
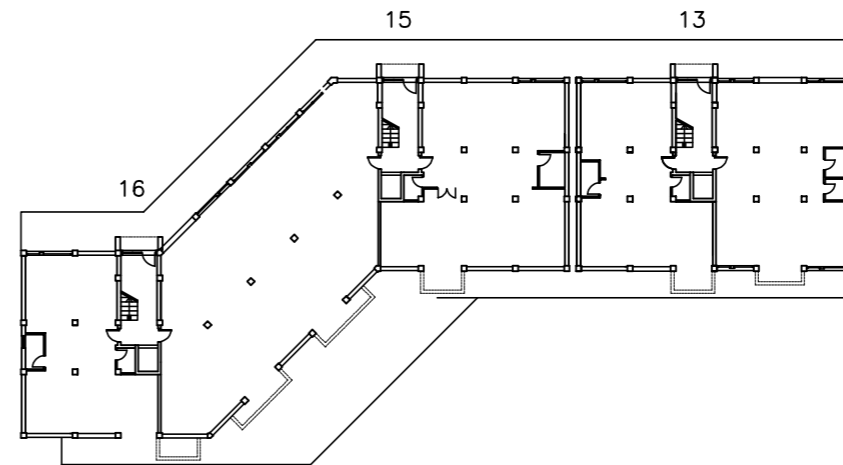
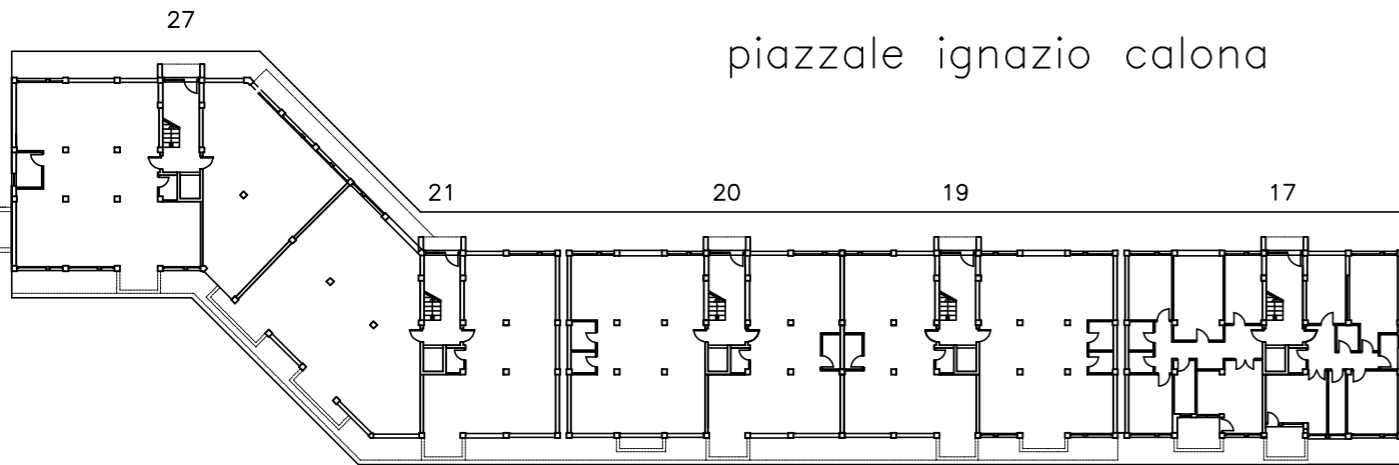
scala 1:500

via pecori giraldi

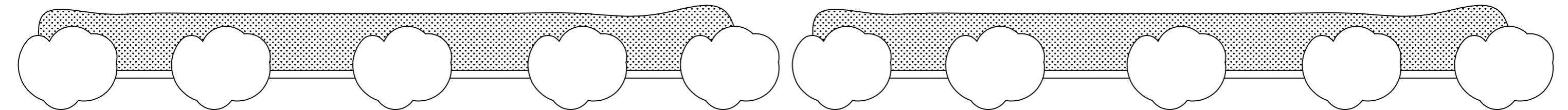
via antonio forni



piazzale ignazio calona



corso dei mille



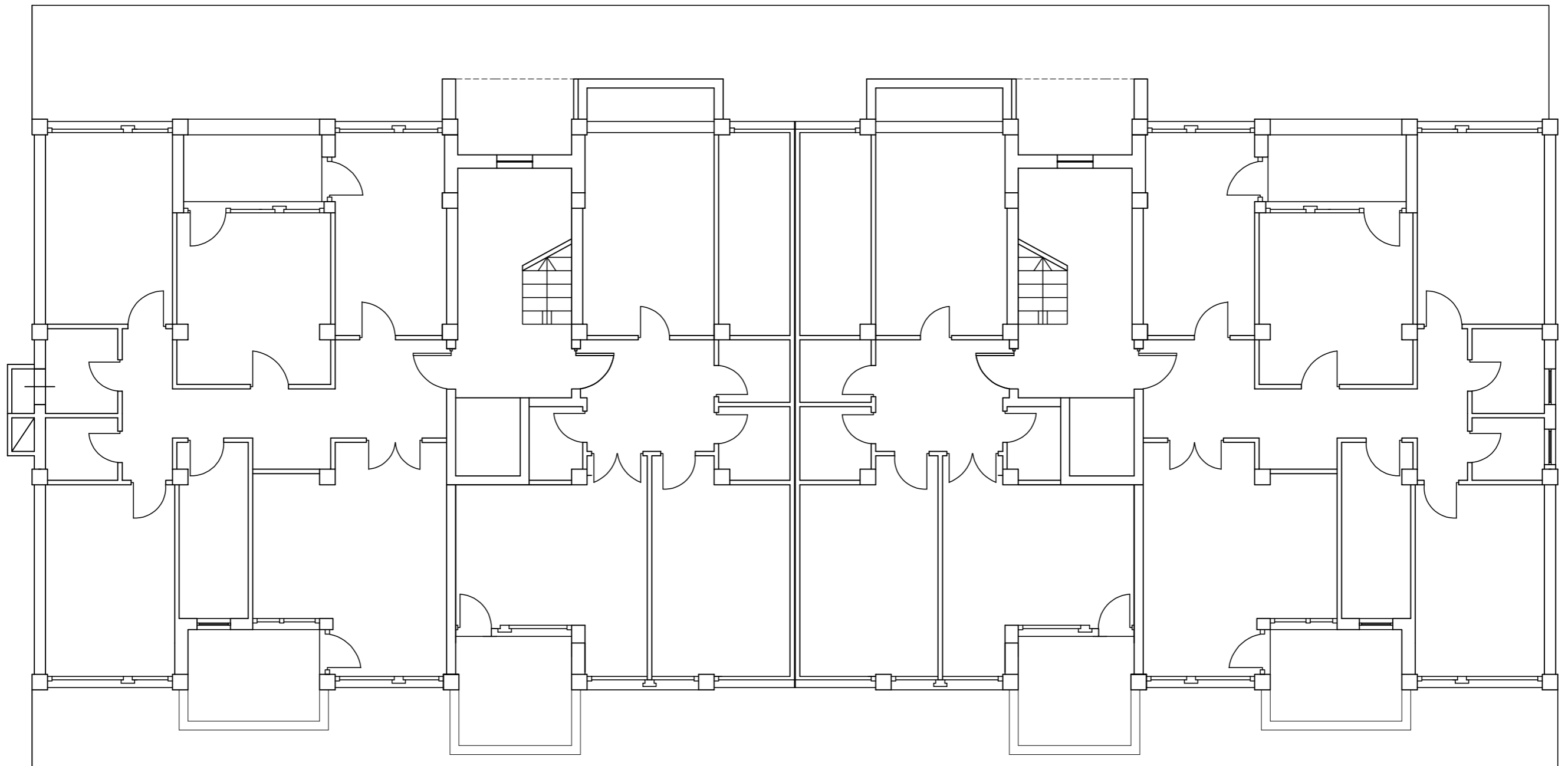
scala 1:100

Prospetto A

12

11

Prospetto B

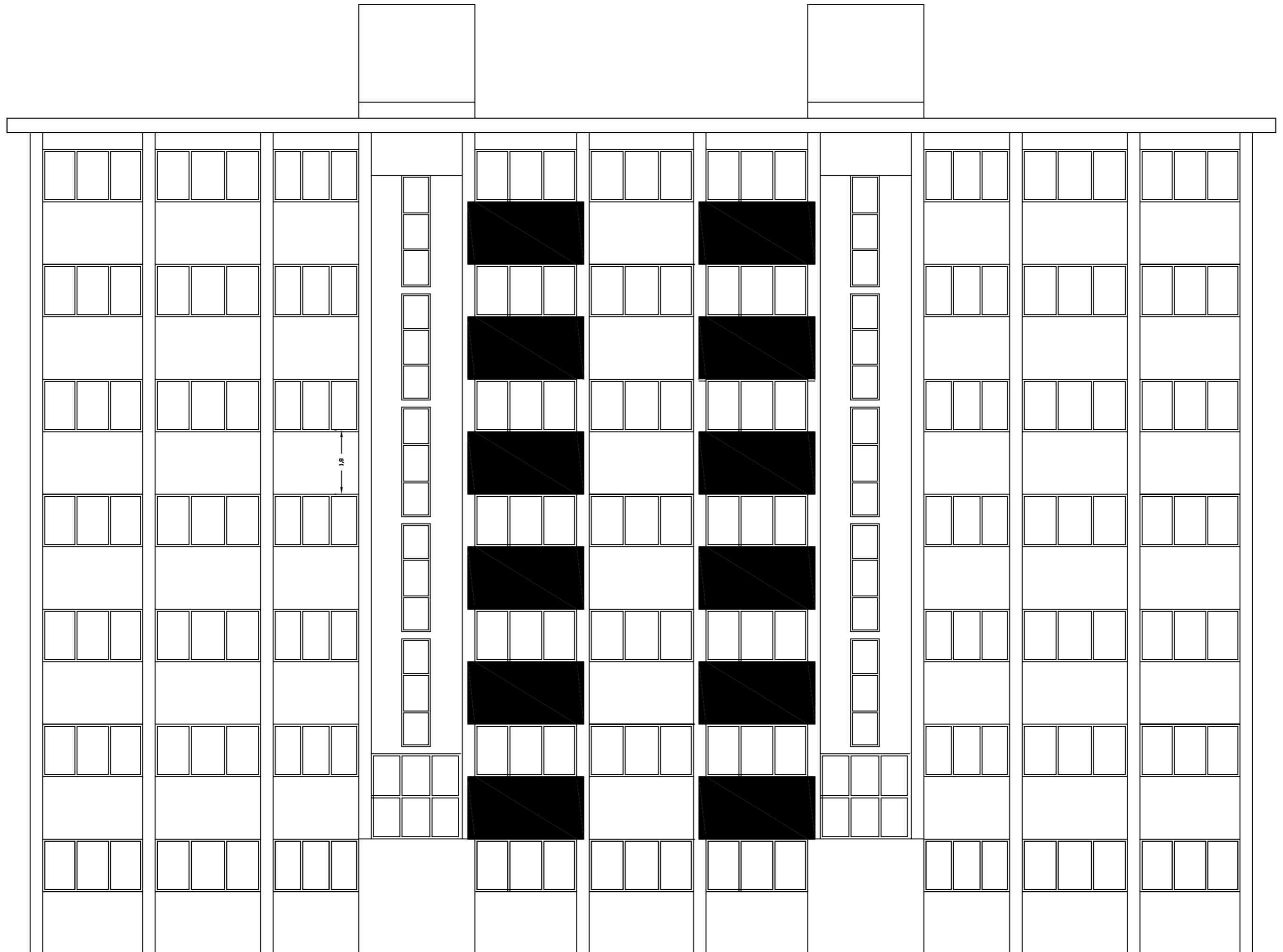


Prospetto D

Prospetto C

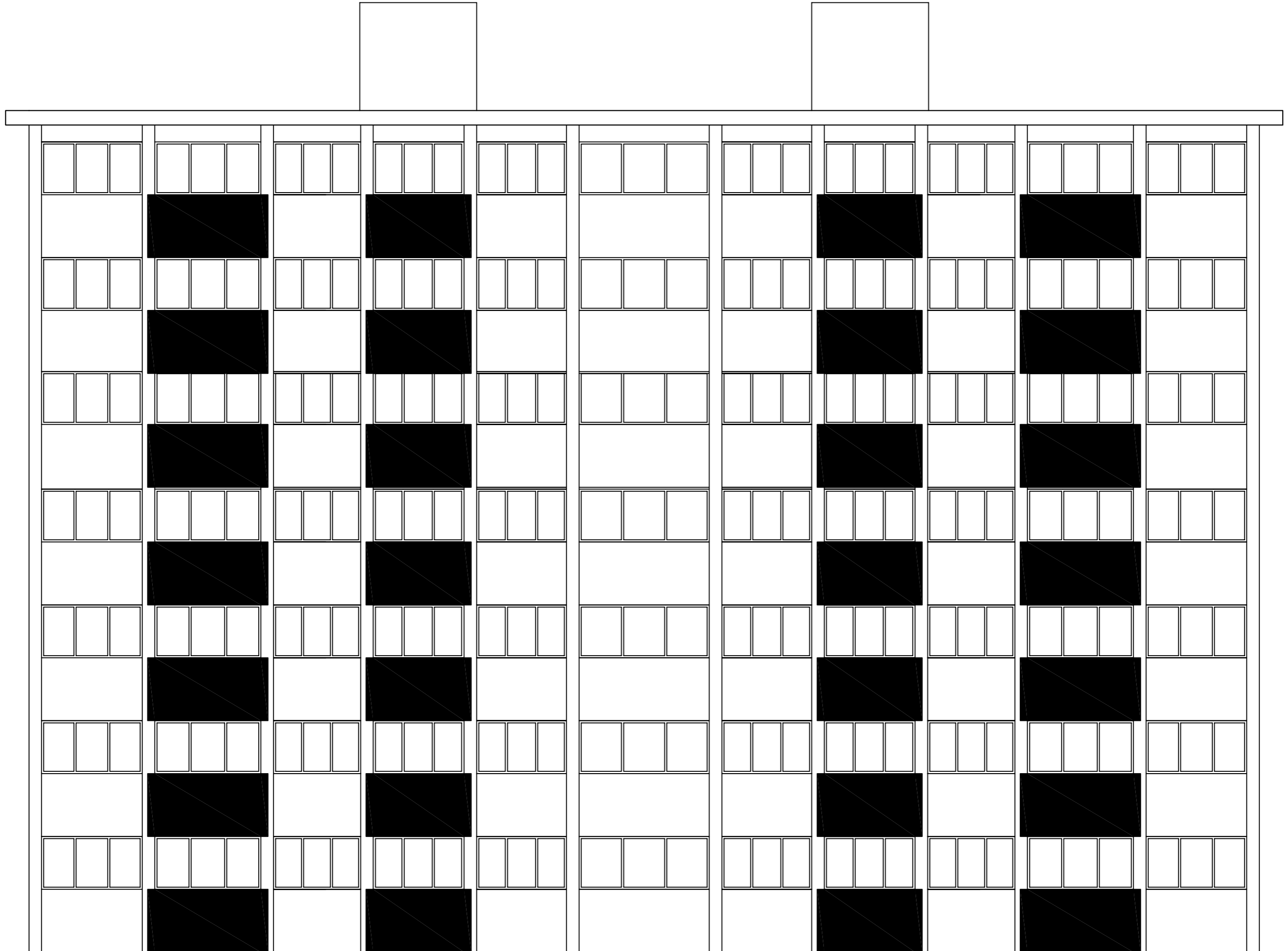
scala 1:100

Prospetto A



scala 1:100

Prospetto C



Prospetto B

scala 1:100

Prospetto D

