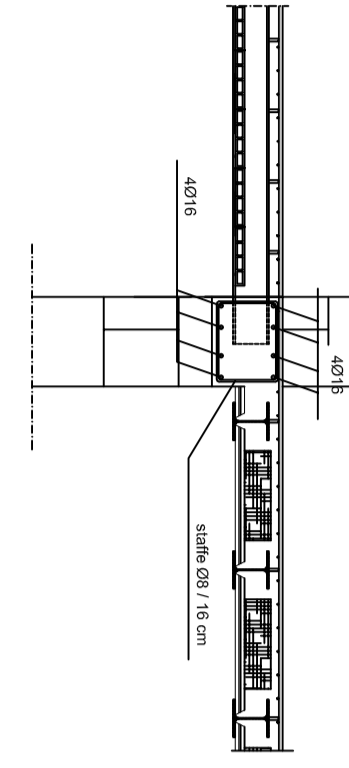
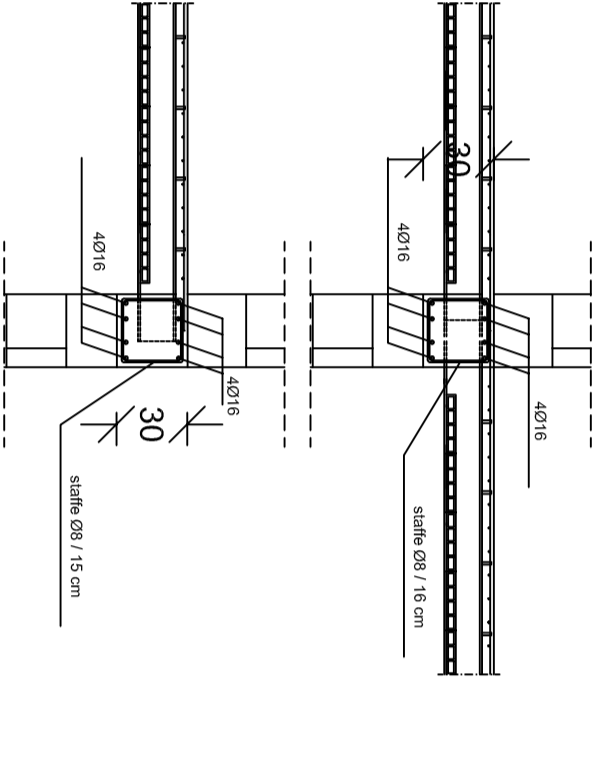


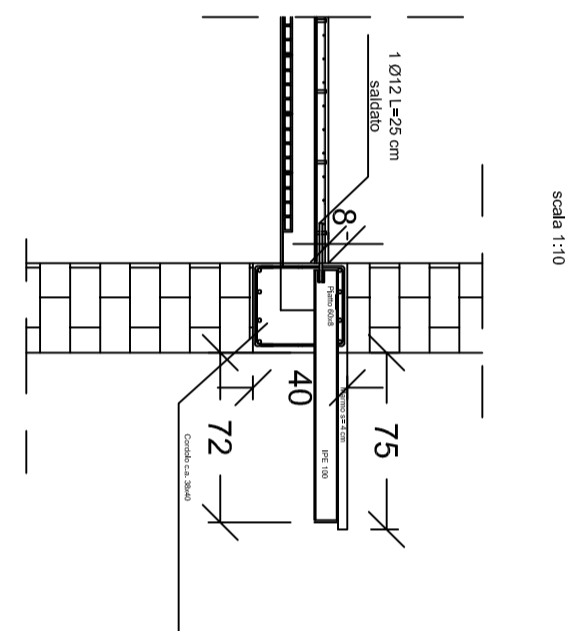
PARTICOLARE CORDOLI DI PIANO IN C.A. con armatura corrente



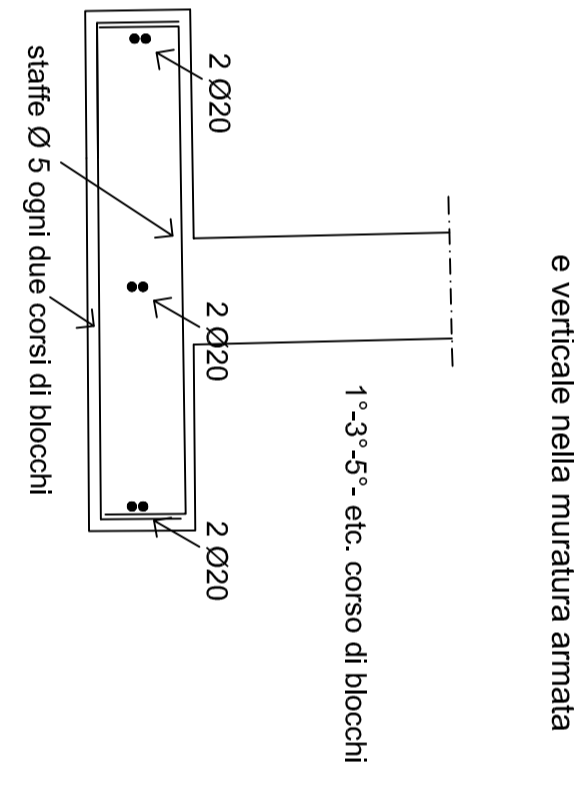
PARTICOLARE CORDOLI DI PIANO IN C.A.



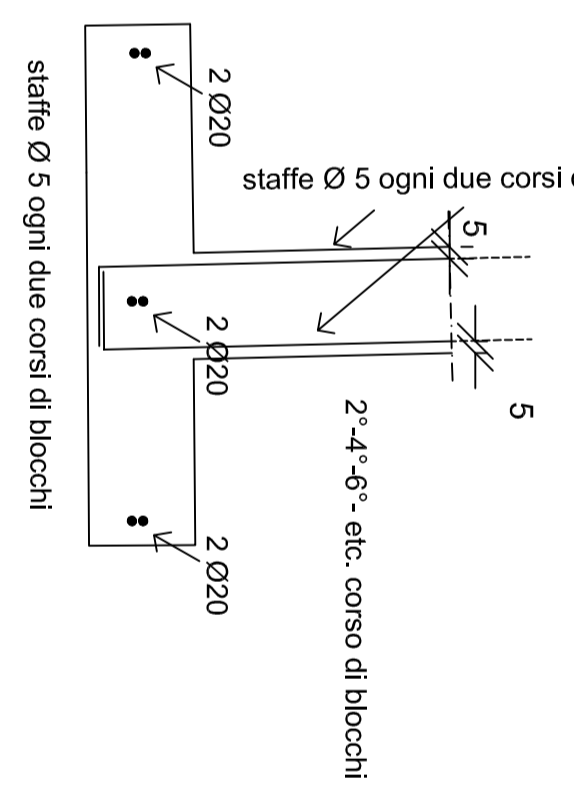
BALCONI CON SPORTO 72 CM



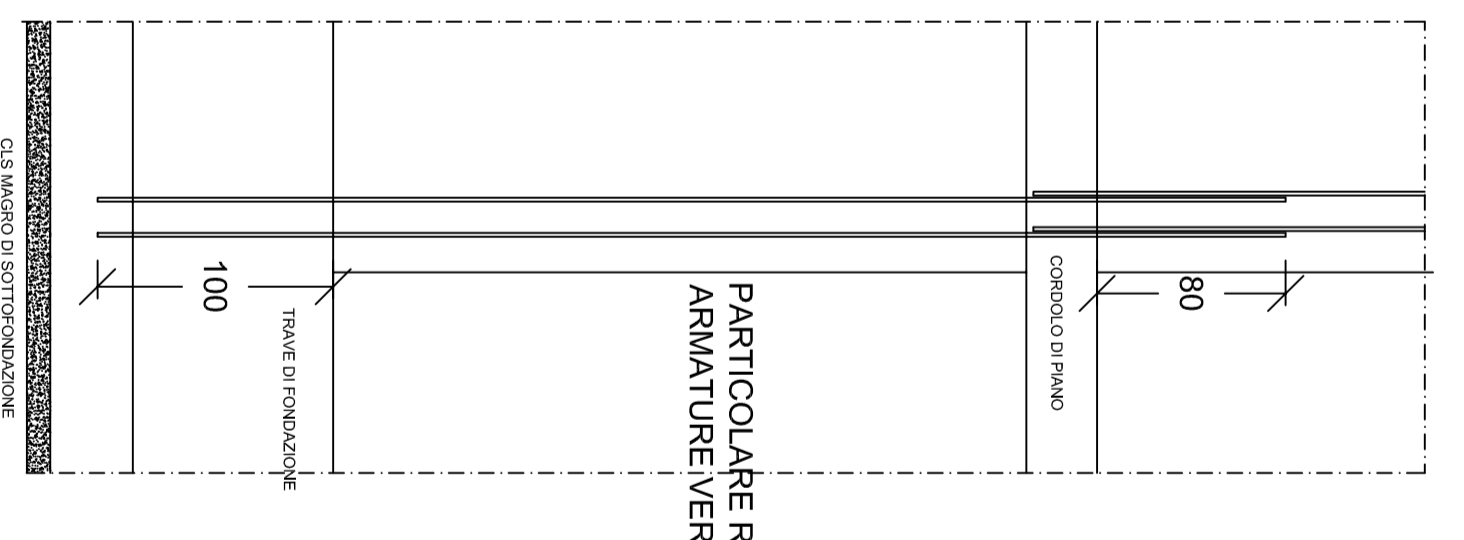
PARTICOLARE disposizione armatura orizzontale e verticale nella muratura armata



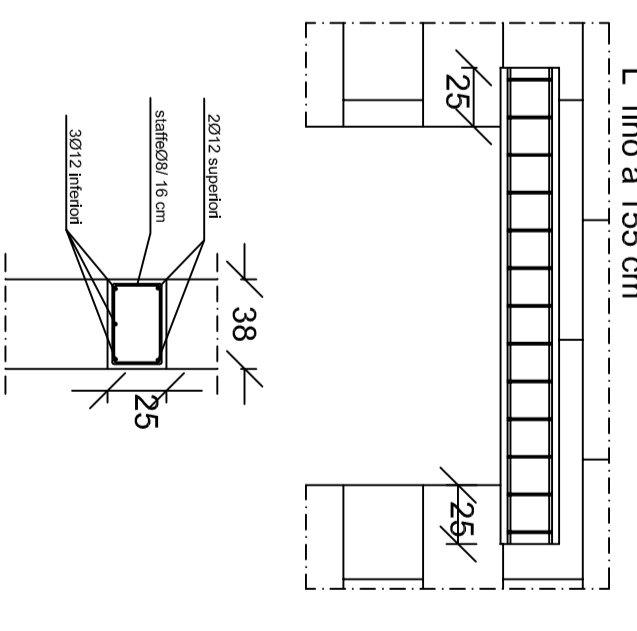
PARTICOLARE disposizione armatura orizzontale e verticale nella muratura armata



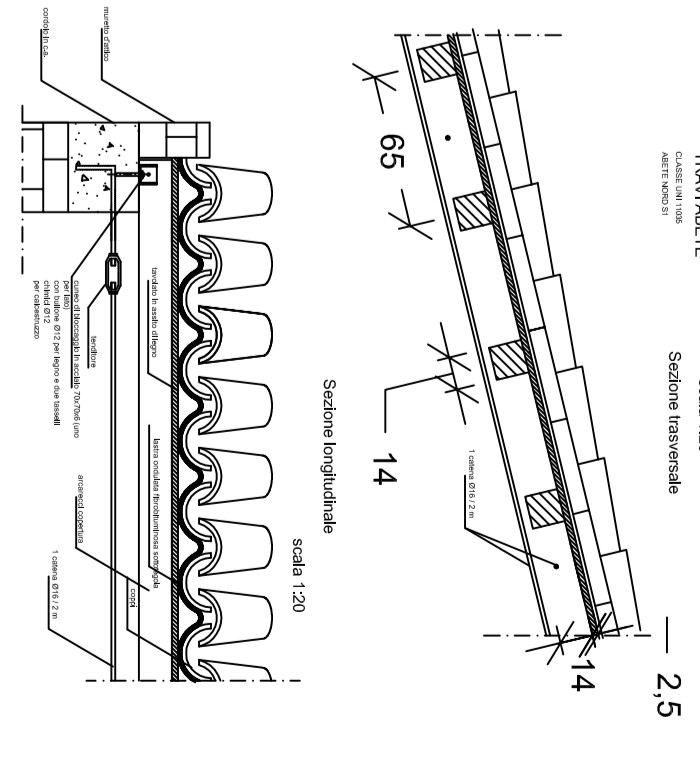
PARTICOLARE RIPRESA ARMATURA VERTICALE



PARTICOLARE ARCHITRAVVI C.A. L fino a 155 cm



COPERTURA INCLINATA IN LEGNO



PARTICOLARE NEI SOLICOLI DI FONDAZIONE

